



U. S. Department of Agriculture
Dillon Ranger District
680 Blue River Parkway
Silverthorne, CO 80498
(970) 468-5400



ARGENTINE PASS - FDT 77

Difficulty: MORE DIFFICULT

Trail Use: Low

Length: 2.2 miles one-way

Elevation: Starts at 11,301 feet and ends at 13,193 feet (highest point 13,193 feet)

Elevation Gain: +1,958 feet - 66 feet = +1,892 feet

Open to: **HIKING, HORSE, MTN. BIKING**

Access:

- From I-70 take Exit 205, Silverthorne / Dillon, and travel east on HWY 6 toward Keystone.
- Just past Keystone, turn right onto Montezuma Road (County Road 5).
- Follow Montezuma Road for approximately 4.6 miles to the junction with Peru Creek Road (FDR 260). Turn left and follow Peru Creek Rd (4WD) for approximately 4.5 miles to the end of motorized access just before the gate and the Shoe Basin Mine. Hike on the road past the gate for approximately 0.4 miles to the Argentine Pass Trailhead on the right.

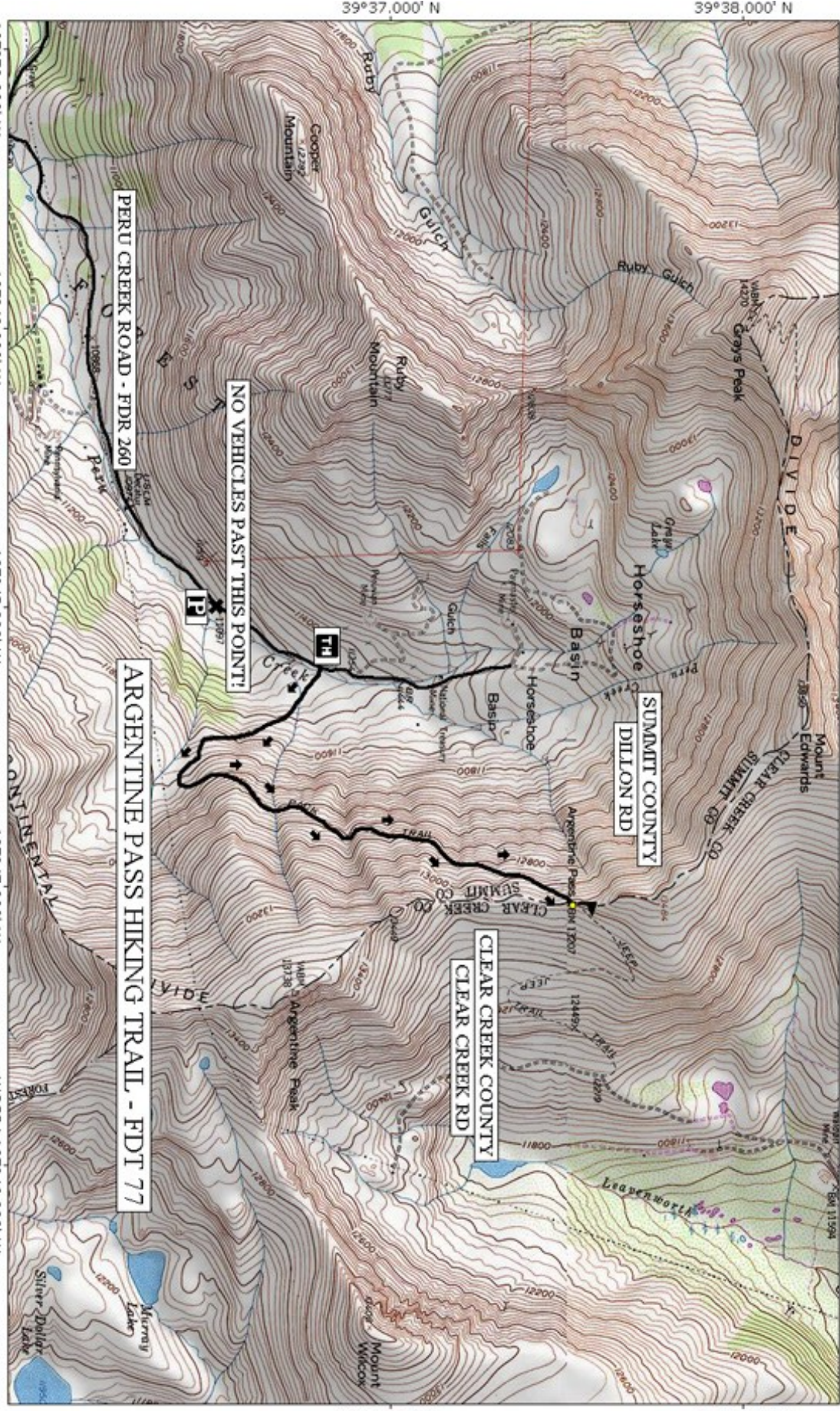
Trail Highlights:

- Most of the trail crosses talus slopes dotted with fragile alpine flowers. Please walk on the rocks whenever possible to prevent resource damage to the delicate alpine tundra
- Spectacular views are to be had from both sides of the Continental Divide upon reaching the summit of Argentine Pass.
- This trail originated as a wagon road in 1867 connecting towns on the western slope of the Continental Divide with the eastern slope towns.
- The Peru Creek drainage is rich in mining history with numerous underground mine shafts, so be careful where you walk.

Important Information:

- Many of the mines are privately owned. Please respect all private property.
- Historic relics are most meaningful in their natural settings. Please leave items where they lay so others may enjoy them.
- Because this trail travels above timberline, you should begin your hike early in the morning because of the ever changing mountain weather. There is always a strong chance of afternoon thundershowers accompanied by LIGHTNING.

*THE INFORMATION CONTAINED HEREIN IS INTENDED TO BE A GENERAL GUIDE ONLY, **NOT** FOR NAVIGATIONAL PURPOSES..*

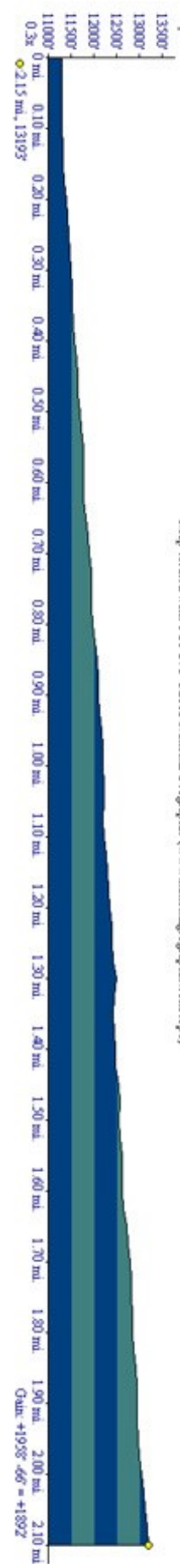


39°37,000' N 39°38,000' N

105°50,000' W 105°49,000' W 105°48,000' W 105°47,000' W

DILLON RANGER DISTRICT WHITE RIVER NATIONAL FOREST

Map created with TOPO® ©2003 National Geographic (www.nationalgeographic.com/topo)



39°37,000' N 39°38,000' N

Gain: +1935' -66' = +1869'