



U. S. Department of Agriculture  
Dillon Ranger District  
680 Blue River Parkway  
Silverthorne, CO 80498  
(970) 468-5400



## **HUNKIDORI MINE ROAD - FDR 276**

**Difficulty:** MODERATE TO MORE DIFFICULT

**Trail Use:** Low

**Length:** 3.1 miles (one-way)

**Elevation:** Starts at 10,302 feet and ends at 11,022 feet (highest point 11,022 feet)

**Elevation Gain:** +978 feet - 258 feet = +720 feet

**Open in Summer To:** HIKING, MTN. BIKING

**Open in Winter To:** X-C SKIING, SNOWSHOEING

### **Access:**

- From I-70 take Exit 205, Silverthorne / Dillon, and travel east on HWY 6 toward Keystone.
- Just past Keystone, turn right onto Montezuma Road (County Road #5).
- Follow Montezuma Road for 7 miles to the town of Montezuma.

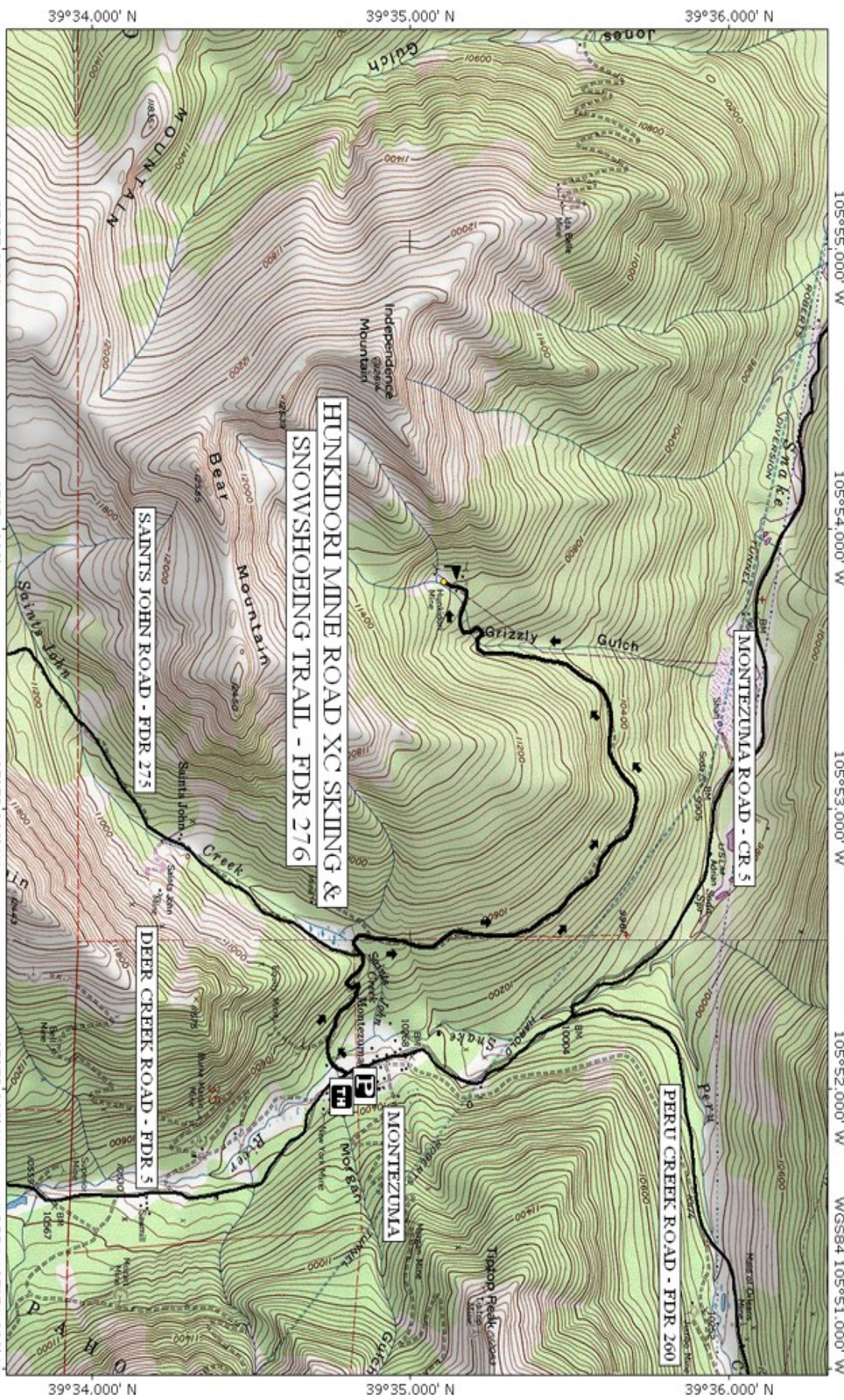
### **Trail Highlights:**

- Follow the road from the trailhead toward Saints John for approximately .5 miles to an intersection. The road to Hunkidori Mine continues from the right at the fork in the road, Saints John to the left.
- You will see a trail branching off to your right, this will take you along the north side of a meadow. Keep bearing to the right to stay on the Hunkidori Mine Road.
- A small trailhead sign for Hunkidori Mine will be at this intersection with the Saints John Road.
- Once across the creek, pick up the trail again as it passes into thick spruce and fir trees.
- You will be entering a stand of Red Barked spruce. This species of Englemann spruce are over 200 years old.
- After approximately 2 miles, the trail will bear to the left and loop back to the southwest.
- The trail will become steeper the closer you get to the mine. The mine sits in a bowl on the north side of Bear Mountain.

### **Important Information:**

- This trail crosses potentially dangerous avalanche paths. Please travel appropriately.

*THE INFORMATION CONTAINED HEREIN IS INTENDED TO BE A GENERAL GUIDE ONLY, **NOT** FOR NAVIGATIONAL PURPOSES..*



TOP01 map printed on 01/14/05 from "hunkidortrailXC102004.tpo" and "Untitled.tpg"

**HUNKIDORI MINE ROAD XC SKIING & SNOWSHOEING TRAIL - FDR 276**

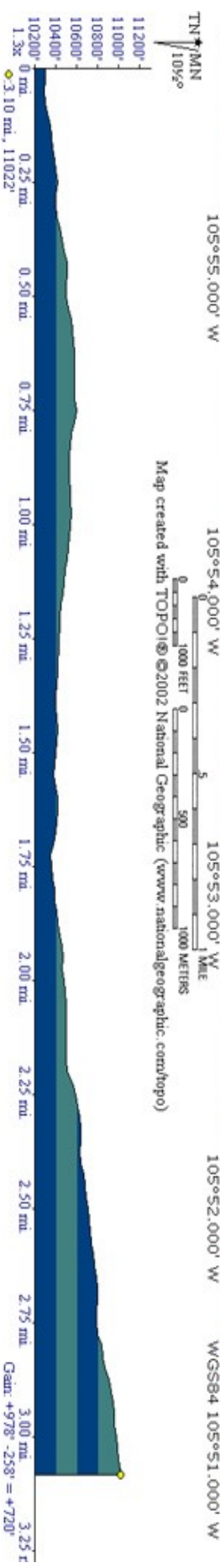
**SAINTS JOHN ROAD - FDR 275**

**MONTEZUMA ROAD - CR 5**

**PERU CREEK ROAD - FDR 260**

**DEER CREEK ROAD - FDR 5**

**MONTEZUMA**



Map created with TOP01 © 2002 National Geographic (www.nationalgeographic.com/topo)

Gain: +978' -258' = +720'