



U. S. Department of Agriculture
Dillon Ranger District
680 Blue River Parkway
Silverthorne, CO 80498
(970) 468-5400



LILY PAD LAKE - FDT 50

Difficulty: EASY TO MODERATE

Trail Use: Heavy

Length: 1.4 miles (one-way)

Elevation: Starts at 9,825 feet and ends at 9,917 feet (highest point 9,952 feet)

Elevation Gain: +127 feet - 35 feet = +92 feet

Open To: **HIKING, X-C SKIING, SNOWSHOEING**

Access:

- From I-70 take Exit 205, Silverthorne / Dillon, and travel north on HWY 9 to the first traffic light, turn left onto Wilderndest Road. In 0.2 miles, turn left onto Wilderndest Road (again).
- Travel 3.6 miles on Wilderndest Road (turns into Ryan Gulch Road). You will pass many condos and at the top of the hill there will be a trailhead parking area on the left.
- There are two trailheads that leave from this parking lot, be sure to start at Lily Pad Lake Trailhead.

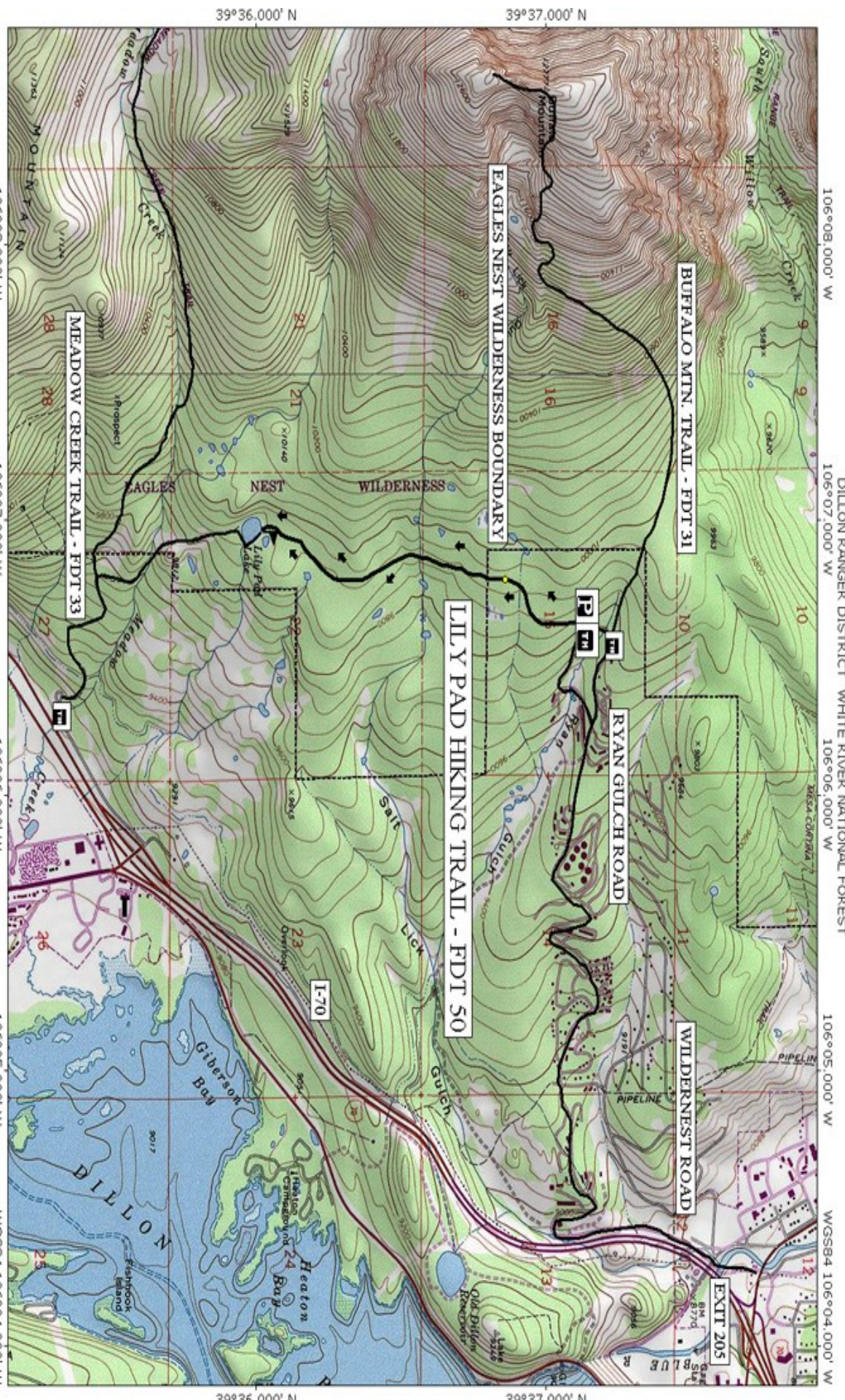
Trail Highlights:

- This trail enters the Eagles Nest Wilderness Area (see below for regulations).
- There are great views of the Dillon Reservoir and the entire Blue River Valley from the trailhead.
- The trail travels south from the trailhead, through thick stands of lodgepole pine and aspen.
- Along the trail you will cross some small streams and several beaver ponds will be visible from the trail. These beaver ponds attracted fur trappers during 1810 - 1840, the boom years of the fur trade.
- You may turn around and return the same way or continue south toward the Meadow Creek Trail (FDT 33). This will require a car shuttle or ride the free Summit County bus back to the trailhead.

Eagles Nest Wilderness Regulations:

- **Motor vehicles, mountain bikes, and motorized equipment are prohibited.**
- **DOGS MUST BE ON A LEASH AT ALL TIMES IN THE EAGLES NEST WILDERNESS.**
- **Group size is limited to 15 people.**
- **Camping is prohibited within 100 feet of lakes, streams and trails.**
- **Campfires are prohibited at Lily Pad lake (stoves only).**
- **Please contact Dillon Ranger District office for more information and regulations regarding the Eagles Nest Wilderness Area.**

THE INFORMATION CONTAINED HEREIN IS INTENDED TO BE A GENERAL GUIDE ONLY, **NOT**
FOR NAVIGATIONAL PURPOSES..



DILLON RANGER DISTRICT WHITE RIVER NATIONAL FOREST
 106°08.000' W 106°07.000' W 106°06.000' W 106°05.000' W 106°04.000' W
 WGS84 106°04.000' W

EAGLES NEST WILDERNESS BOUNDARY

BUFFALO MTN. TRAIL - FDT 31

LILY PAD HIKING TRAIL - FDT 50

RYAN GULCH ROAD

WILDERNESS ROAD

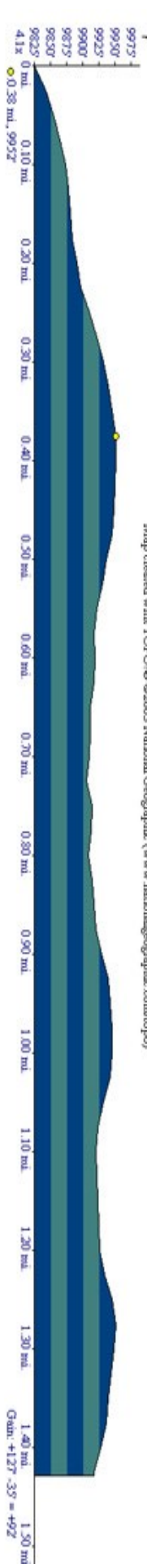
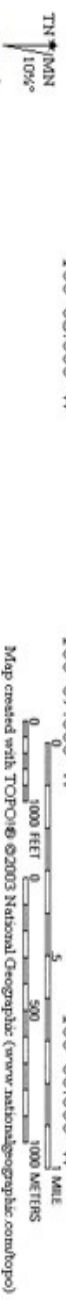
EXIT 205

MEADOW CREEK TRAIL - FDT 33

39°36.000' N 39°37.000' N

106°08.000' W 106°07.000' W 106°06.000' W 106°05.000' W 106°04.000' W
 WGS84 106°04.000' W

39°36.000' N 39°37.000' N



4.1x 0 mi. 0.10 mi. 0.20 mi. 0.30 mi. 0.40 mi. 0.50 mi. 0.60 mi. 0.70 mi. 0.80 mi. 0.90 mi. 1.00 mi. 1.10 mi. 1.20 mi. 1.30 mi. 1.40 mi. 1.50 mi.
 Gran. +127° -39' = +92'