



U. S. Department of Agriculture
 Dillon Ranger District
 680 Blue River Parkway
 Silverthorne, CO 80498
 (970) 468-5400



Mesa Cortina Trail System

Mesa Cortina Trail – #32, Royal Buffalo Trail – #9114, Excelsior Trail – #9112, Mo-wutch Trail – #9116, Poo-wah-gah Trail – #9113, Pah-gah-root Trail – #9111, Leopold Trail – #9110, Pah-nup-utch Trail – #9109, Pasque Trail – #9115, O.K Gaymon Trail – 9123

Difficulty: EASY TO MORE DIFFICULT

Trail Use: Moderate

Length: Mesa Cortina – 2.7 mi., Royal Buffalo – 1.2 mi., Excelsior - 0.5 mi., Mo-wutch – 2.0 mi., Poo-wah-gah – 0.3 mi., Poo-gah-root – 0.2 mi., Leopold – 0.5 mi., Pah-nup-utch – 0.5 mi., Pasque – 0.5 mi., O.K Gaymon – 0.2 mi.,

Elevation: The Mesa Cortina Trailhead is at 9,200 feet. The highest point is at the junction with the Buffalo Cabin Trail at 10,000 feet

Elevation Gain: 800 feet

Open In Winter To: X-C SKIING, SNOWSHOEING

Open In Summer To: HIKING, HORSE,

Access: Mesa Cortina Trailhead

- From I-70 take Exit 205, Silverthorne / Dillon, and travel north on HWY 9 to the first traffic light at the intersection of Rainbow Drive / Wilderrest Road. Turn left onto Wilderrest Road / Ryan Gulch Rd.
- Continue through two stoplights onto Buffalo Mountain Drive.
- After 0.8 miles, turn right onto Lakeview Drive. Travel 0.45 miles and turn left onto Aspen Drive.
- The Mesa Cortina trailhead and parking area will be on your right in 0.15 miles.

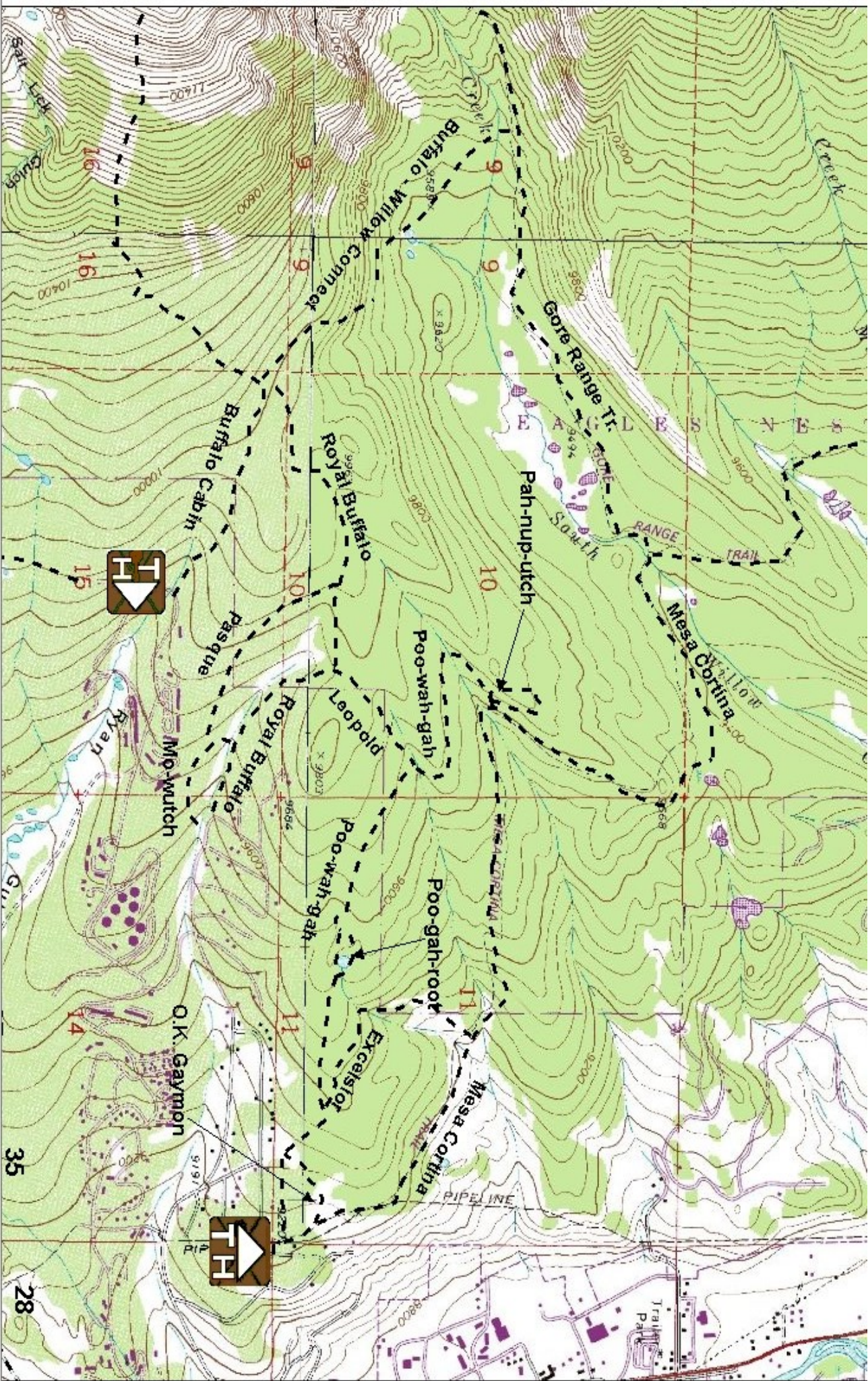
Trail Highlights:

- This trail enters the Eagles Nest Wilderness Area (see below for regulations).
- The Mesa Cortina trail winds through aspen groves into a meadow which offers a good view of the Ptarmigan Peak Wilderness. After the first meadow is the Eagles Nest Wilderness boundary.
- The Mesa Cortina Trail then travels through lodgepole pine forests and crosses South Willow Creek just before intersecting with the Gore Range Trail (#60). Following the fork right takes you north while taking the left fork takes you south toward South Willow Falls.
- This system provides access to the Gore Range Tr. which runs 52 miles through the Eagles Nest Wilderness.

Eagles Nest Wilderness Regulations:

- **Motor vehicles, mountain bikes, and motorized equipment are prohibited.**
- **DOGS MUST BE ON A LEASH AT ALL TIMES IN THE EAGLES NEST WILDERNESS.**
- **Group size is limited to 15 people.**
- **Camping is prohibited within 100 feet of lakes, streams and trails.**
- **Campfires are prohibited at Lily Pad lake (stoves only).**
- **Please contact Dillon Ranger District office for more information and regulations regarding the Eagles Nest Wilderness Area.**

THE INFORMATION CONTAINED HEREIN IS INTENDED TO BE A GENERAL GUIDE ONLY, **NOT** FOR NAVIGATIONAL PURPOSES.



Mesa Cortina / South Willow Falls Trail System