



U. S. Department of Agriculture  
 Dillon Ranger District  
 680 Blue River Parkway  
 Silverthorne, CO 80498  
 (970) 468-5400



## PENNSYLVANIA CREEK ROAD - FDR 611

**Difficulty:** MODERATE

**Trail Use:** Low

**Length:** 2.5 miles one-way

**Elevation:** Starts at 10,037 feet and ends at 11,195 feet (highest point 11,195 feet)

**Elevation Gain:** +2,102 feet - 937 feet = +1,165 feet

**Open In Summer To:** HIKING, HORSE, MTN. BIKING, 4X4, ATV, MOTORCYCLE

**Open In Winter To:** X-C SKIING, SNOWSHOEING

### Access:

- From I-70 take Exit 203, Frisco / Breckenridge, and travel south on HWY 9 toward Breckenridge.
- Travel through Breckenridge. Approximately 3.4 miles past Boreas Pass Road traffic light turn left at Blue River Road and continue straight to where the road forks at Royal Drive and Regal Circle.
- Bear to the right on Royal Drive and follow the road to Coronet Drive, which will be on the right.
- Turn right onto Coronet Drive and when the paved road ends, this will be the beginning of the OHV portion of Pennsylvania Creek Road.
- **Seasonal Closure:** Pennsylvania Creek Road is closed to motor vehicles Nov. 23 thru May 20 or until road is dry.

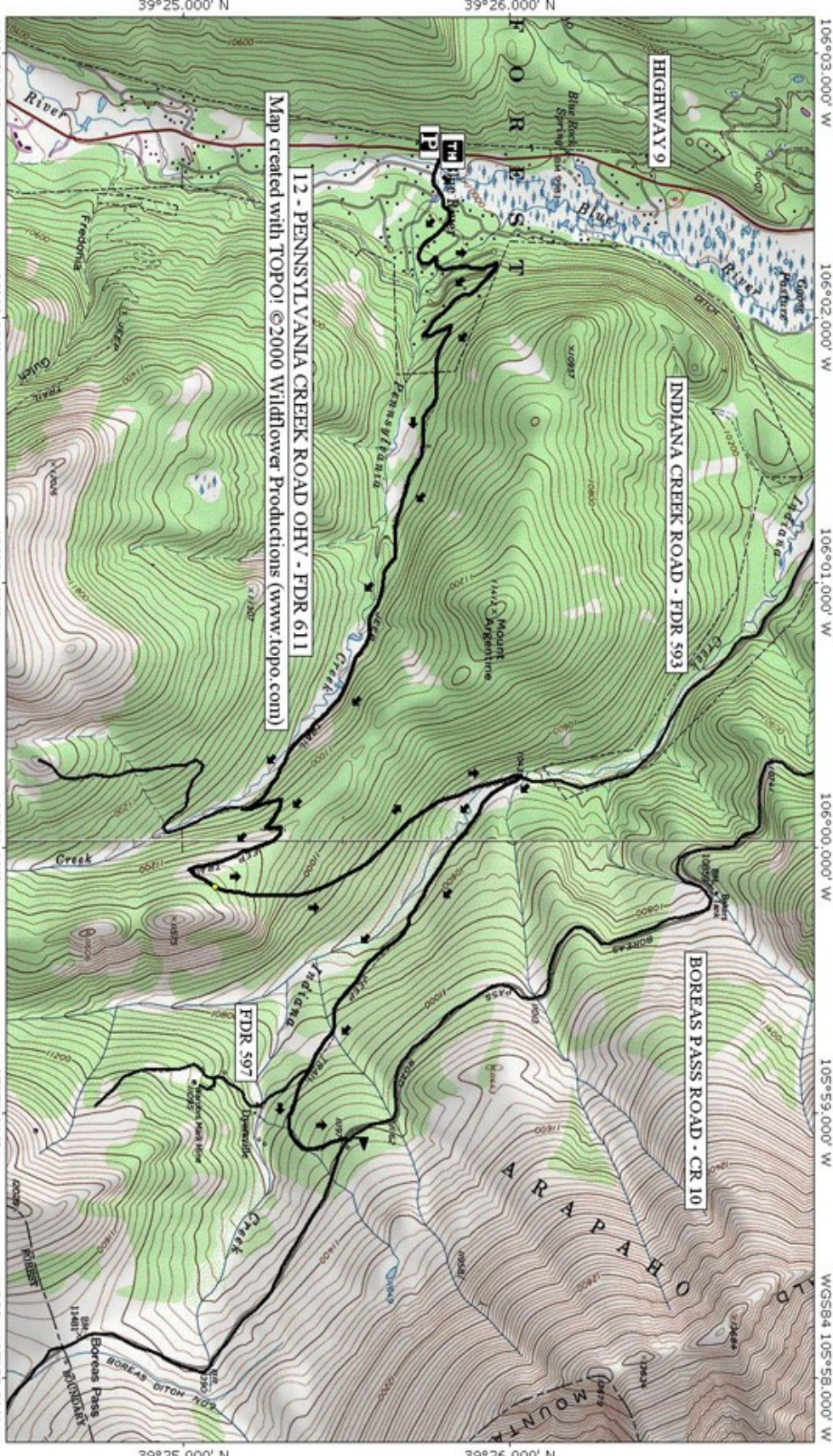
### Trail Highlights:

- Pennsylvania Creek Road climbs up the valley and eventually after approximately 2.5 miles you can turn left and drop down to Indiana Creek Rd (FDR 593). At this point you can continue to Boreas Pass Rd (FDR10) or visit the old mining town of Dyersville and Warriors Mark Mine.
- Another popular route involves making a loop from Pennsylvania Creek Road to Indiana Creek Road.
- The National Forest to the north of Pennsylvania Creek is for non-motorized use only.

### Important Information:

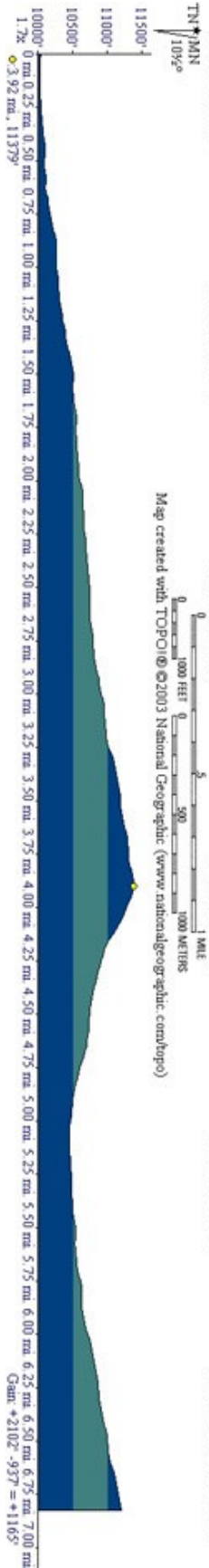
- Off-highway vehicles must be registered with Colorado State Parks. Out-of-state residents who bring OHVs into Colorado must purchase a Colorado Non-Resident OHV permit.
- **STAY ON DESIGNATED ROADS TO PREVENT RESOURCE DAMAGE.**
- Private land exists near the beginning of this route. Please respect all private property.

THE INFORMATION CONTAINED HEREIN IS INTENDED TO BE A GENERAL GUIDE ONLY, **NOT** FOR NAVIGATIONAL PURPOSES..



12 - PENNSYLVANIA CREEK ROAD OHV - FDR 611  
 Map created with TOPOI ©2000 Wildflower Productions (www.topo.com)

Map created with TOPOI ©2003 National Geographic (www.nationalgeographic.com/topo)



0 rna. 0.25 rna. 0.50 rna. 0.75 rna. 1.00 rna. 1.25 rna. 1.50 rna. 1.75 rna. 2.00 rna. 2.25 rna. 2.50 rna. 2.75 rna. 3.00 rna. 3.25 rna. 3.50 rna. 3.75 rna. 4.00 rna. 4.25 rna. 4.50 rna. 4.75 rna. 5.00 rna. 5.25 rna. 5.50 rna. 5.75 rna. 6.00 rna. 6.25 rna. 6.50 rna. 6.75 rna. 7.00 rna.  
 1.7x 3.92 rna. 11379'