



U. S. Department of Agriculture
Dillon Ranger District
680 Blue River Parkway
Silverthorne, CO 80498
(970) 468-5400



SALLIE BARBER MINE ROAD - FDR 559

Difficulty: EASY TO MODERATE

Trail Use: Moderate

Length: 1.4 miles (one-way)

Elevation: Starts at 10,297 feet and ends at 10,690 feet (highest point 10,690 feet)

Elevation Gain: +393 feet - 0 feet = +393 feet

Open To: **HIKING, HORSE, MTN. BIKING, X-C SKIING, SNOWSHOEING**

Access:

- From I-70 take Exit 203, Frisco / Breckenridge, and travel south on HWY 9 through Frisco and travel to Breckenridge
- Turn left at the 7-11 store at the intersection of County Road 450 and HWY 9.
- After approximately 0.4 miles the road forks, take the right fork Reiling Rd (County Road 460) into the subdivision. In approx. 0.71 miles you will come to a stop sign. Turn left onto French Gulch Rd. (County Road 2).
- In approximately 2.75 miles there is a trailhead parking area on your right. Beyond this point there is no public parking so please park here.

Trail Highlights:

- Start up French Gulch Road and in a short distance turn right onto the Sallie Barber Road.
- This trail is just the right distance for a quick morning or afternoon tour.
- Along French Gulch are piles of smooth rock left from the gold boat dredging operations; look at the Blue River Valley, north of Breckenridge, for an example of modern reclamations of similar tailings.
- The Sallie Barber Mine produced a rich zinc ore and operated until 1909.
- For a unique experience, tour the road to the Sally Barber Mine on a moonlit night.

Important Information:

- Much of the land along the trail is privately owned. Please respect the private property by staying on the trail and do not disturb buildings.
- The mining ruins and tailings are typically on private land and can be very dangerous.

THE INFORMATION CONTAINED HEREIN IS INTENDED TO BE A GENERAL GUIDE ONLY, NOT FOR NAVIGATIONAL PURPOSES..

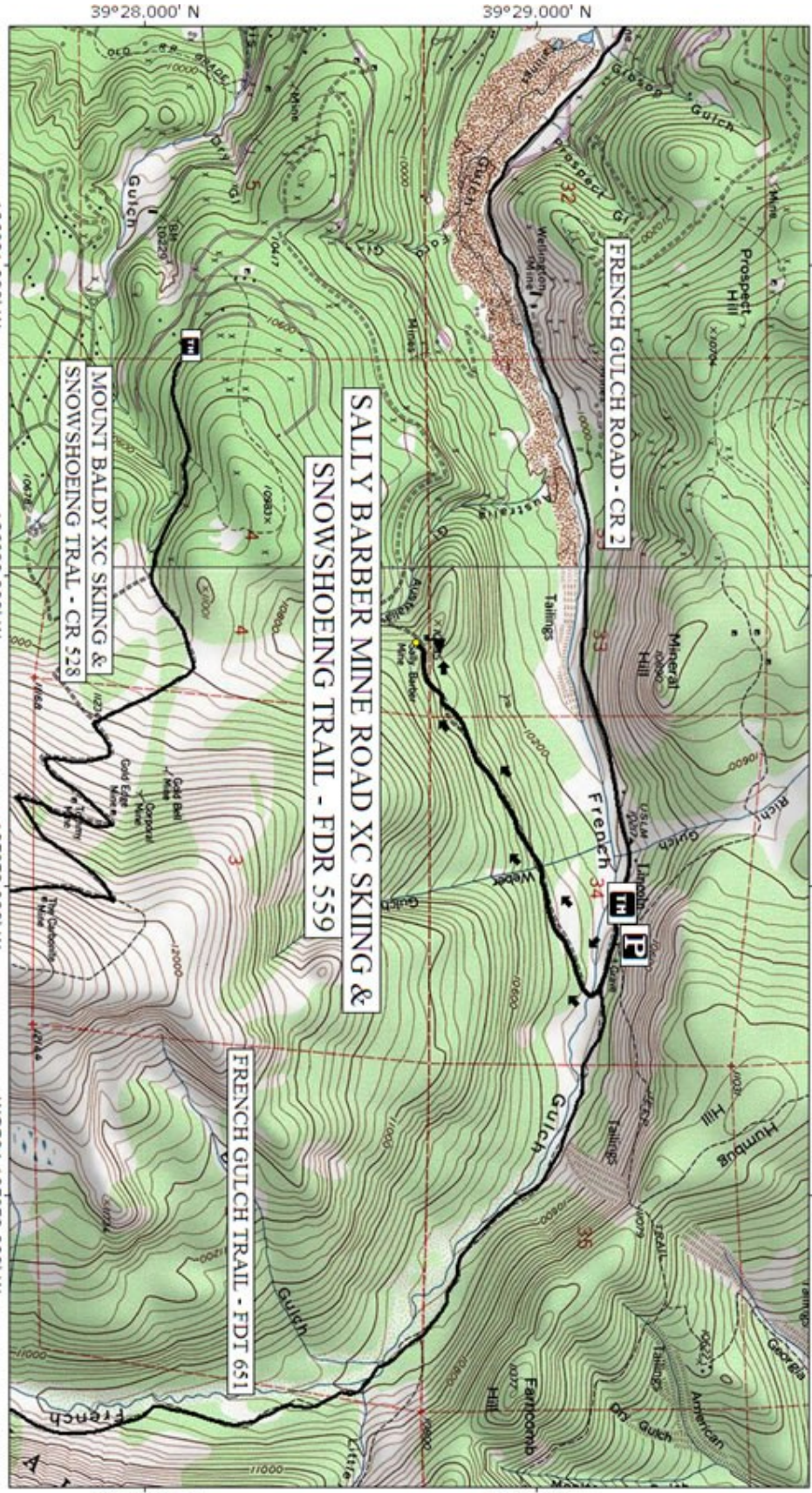
106°01.000' W

TOP01 map printed on 02/07/06 from "sally_barber_xc020706.tpo" and "Untitled1.pg"

106°00.000' W

105°59.000' W

105°58.000' W



Map created with TOPO!® ©2002 National Geographic (www.nationalgeographic.com/topo)

