



U. S. Department of Agriculture
 Dillon Ranger District
 680 Blue River Parkway
 Silverthorne, CO 80498
 (970) 468-5400



WEBSTER PASS ROAD - FDR 285

Difficulty: MORE DIFFICULT

Trail Use: Moderate

Length: 3.7 miles (one-way to Webster Pass summit)

Elevation: Starts at 10,578 feet and ends at 12,085 feet (highest point 12,085 feet)

Elevation Gain: +1,507 feet - 0 feet = +1,507 feet

Open In Summer To: HIKING, HORSE, MTN. BIKING, 4X4, ATV, MOTORCYCLE

Open In Winter To: X-C SKIING, SNOWSHOEING, SNOWMOBILING

Access:

- From I-70 take Exit 205, Silverthorne / Dillon, and travel east on HWY 6 toward Keystone.
- Just past Keystone, turn right onto Montezuma Road (County Road 5).
- Follow Montezuma Road for 7 miles to the town of Montezuma. Travel through Montezuma to Webster Pass Road.
- Parking is located at the Deer Creek trailhead which is 0.5 miles up Montezuma Road past the town.
- **Seasonal Closure:** Webster Pass Road is closed to motor vehicles Nov. 23 thru May 20 or until road is dry.

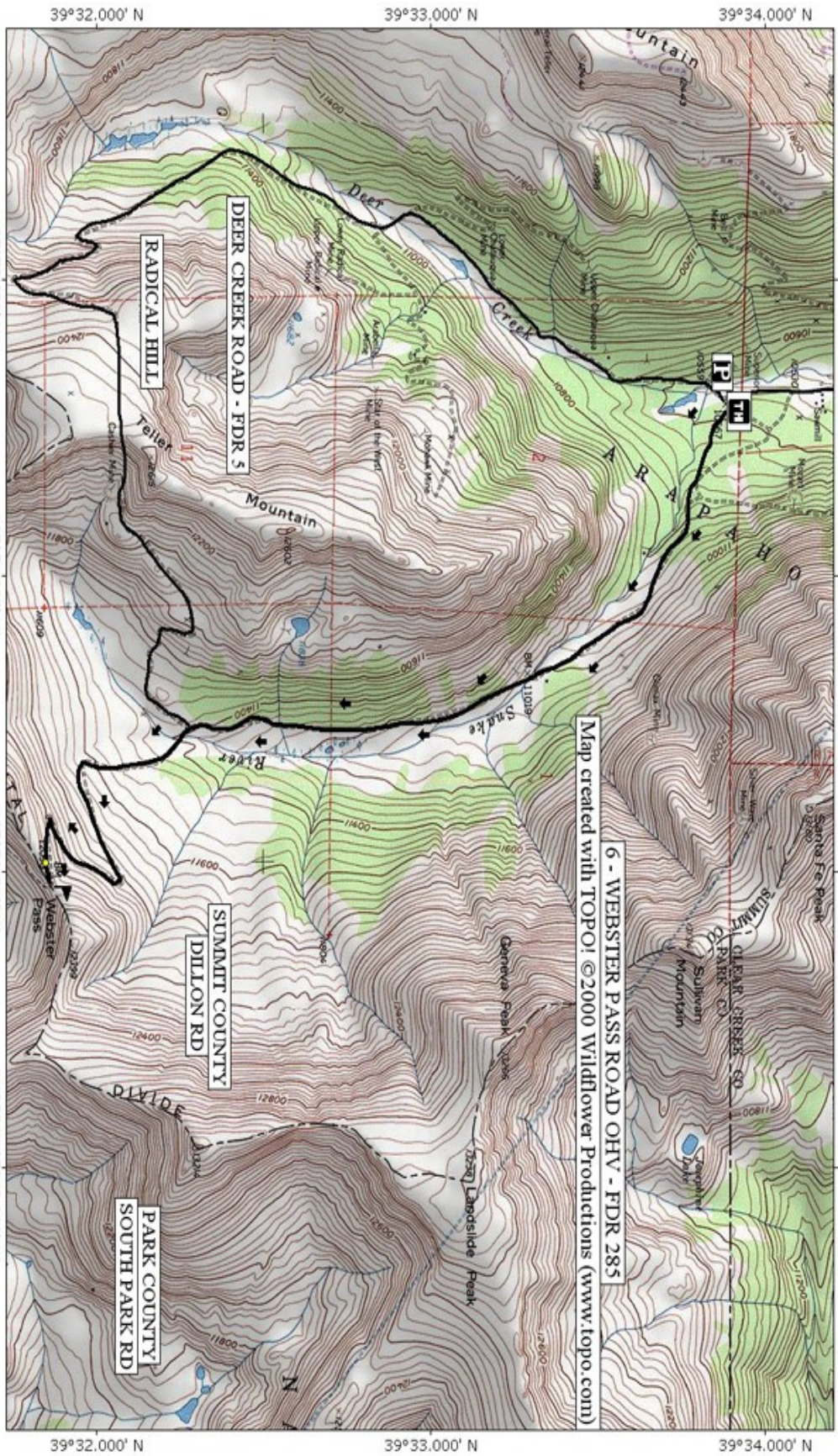
Trail Highlights:

- Webster Pass Rd provides OHV enthusiasts with an excellent opportunity to view the alpine environment along with spectacular views of the Continental Divide.
- Approximately 2.4 miles from the trailhead, you will come to a road intersection. Go to the left to continue toward the summit of Webster Pass, or veer right to go over Radical Hill to Deer Creek Road. A loop can be made by taking Radical Hill to Deer Creek; or over Glacier Ridge to Sts John and back through Montezuma. This loop is rated “more difficult”, spotting is recommended in some places.
- Montezuma was discovered by miners and settled during the silver boom in 1863.
- Webster Pass Road was opened in 1878. Montezuma hit its peak in 1880 when the population reached 800 and the town was incorporated in 1881.

Important Information:

- Off-highway vehicles must be registered with Colorado State Parks. Out-of-state residents who bring OHVs into Colorado must purchase a Colorado Non-Resident OHV permit.
- Horses are not recommended on this road due to high motorized use.
- This trail is intersected by potentially dangerous avalanche paths. Please travel appropriately.

*THE INFORMATION CONTAINED HEREIN IS INTENDED TO BE A GENERAL GUIDE ONLY, **NOT** FOR NAVIGATIONAL PURPOSES..*



DILLON RANGER DISTRICT WHITE RIVER NATIONAL FOREST

6 - WEBSTER PASS ROAD OHV - FDR 285
 Map created with TOPOi ©2000 Wildflower Productions (www.topo.com)

Map created with TOPOi ©2003 National Geographic (www.nationalgeographic.com/topo)

